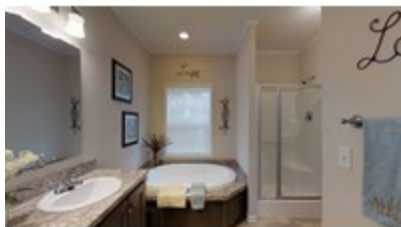
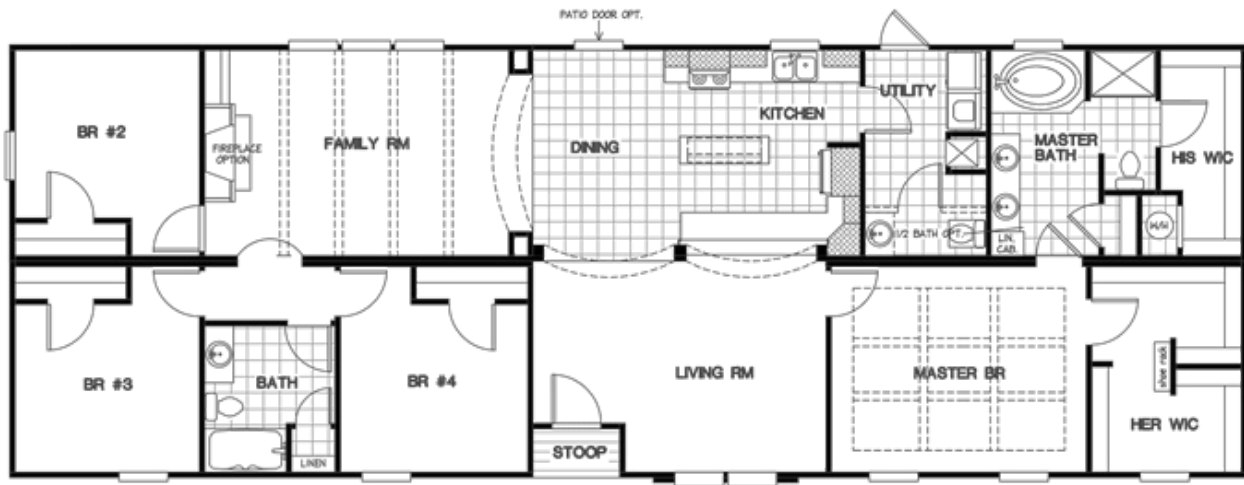




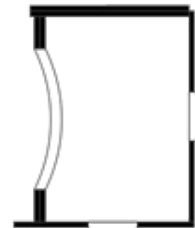
The Pennsylvania Ave



The Pennsylvania Ave Floor plan number: RIC248498NCAB
4 beds • 2 baths • 2128 sq.ft. • 28' width • 76' depth



HOME OFFICE OPTION



ADULT RETREAT OPT.

Our home building facilities invest in continuous product and process improvements. Plans, dimensions, features, materials, specifications and availability are subject to change without notice or obligation. Renderings and floor plans are representative likenesses of our homes and may differ from the actual homes. We invite you to tour a Home Center near you and inspect the highest value in quality housing available or call (910) 796-8202 to speak with a Home Consultant. Copyright 2017, CMH. All rights reserved.

OAKWOOD HOMES- WILMINGTON

5536 OLEANDER DRIVE
WILMINGTON, NC 28403

Monday - Thursday: 9am - 6pm

Friday: 9am - 5pm

Saturday: 9am - 5pm

Sunday: Closed

(910) 796-8202